



# Services for Young People within *sedqa*

Remona Cuschieri

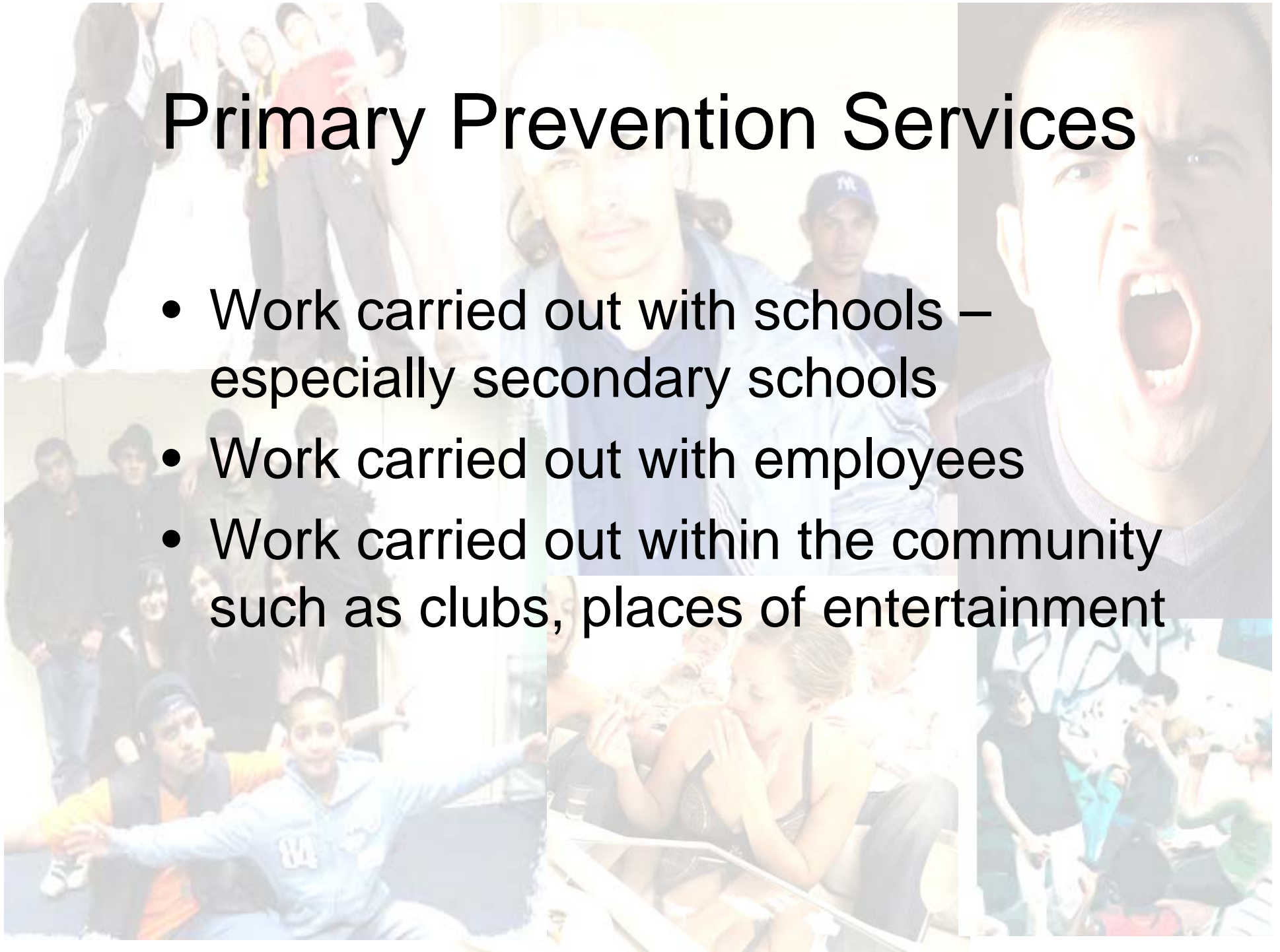


sedqa offers different services  
targeted at  
different population groups

- Primary Prevention Team
- Teen Support Services
- Other care services

# Primary Prevention Services

- Work carried out with schools – especially secondary schools
- Work carried out with employees
- Work carried out within the community such as clubs, places of entertainment



# Teen Support Services



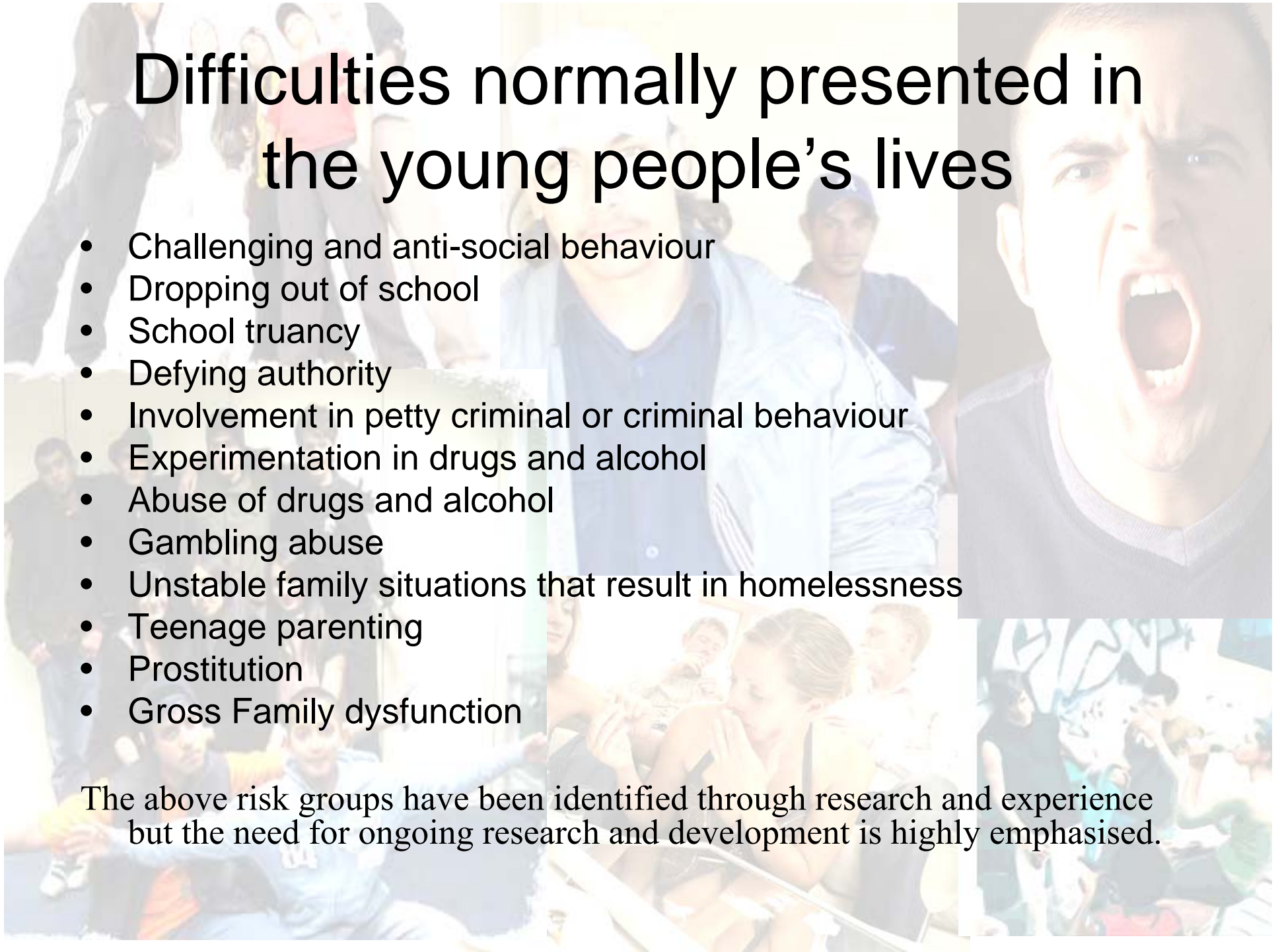
## Objectives

1. identify risk groups/individuals and work on vulnerability factors in their life, consequently reducing the risky activities/situations that may lead to chaotic behaviour.
2. build on the strengths of clients, thus enhancing their skills which buffer them from harmful behaviour

# Difficulties normally presented in the young people's lives

- Challenging and anti-social behaviour
- Dropping out of school
- School truancy
- Defying authority
- Involvement in petty criminal or criminal behaviour
- Experimentation in drugs and alcohol
- Abuse of drugs and alcohol
- Gambling abuse
- Unstable family situations that result in homelessness
- Teenage parenting
- Prostitution
- Gross Family dysfunction

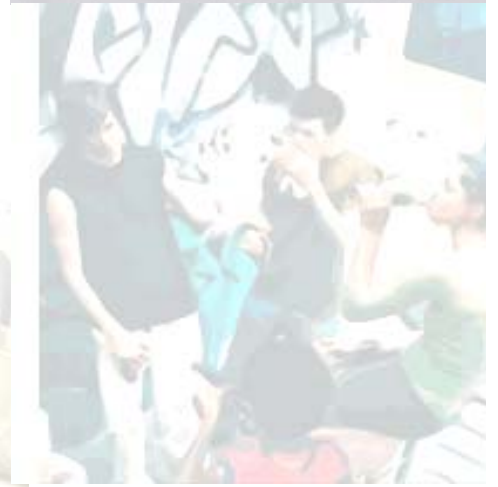
The above risk groups have been identified through research and experience but the need for ongoing research and development is highly emphasised.



# Receiving Referrals

Referrals come from a number of sources

- Parents
- Schools – Safe Schools
- Probation Officers
- Self
- Homes
- Mental Health Institutions
- Police
- Courts of Law





# How do we work

1. Peripatetic Outreach – work undertaken in community-based agencies/organisations eg. Booster programme in schools, children's homes and the Juvenile Prison by means psycho-socio-educational group sessions where the aim is to identify risky behaviour/factors which the individuals are involved in, give information about the effects and consequences of their behaviour and refer individuals for further interventions as necessary
2. One-to-one work carried out with young people and their families and/or significant others.
3. Referral work to other services within sedqa or other specialised agencies

# Other Care Services

- Drugs, Alcohol and Gambling Community Teams - Work carried out with individuals manifesting drug, alcohol or gambling abuse who may be parents or siblings to adolescents.
- Residential Rehabilitation
- Substance Misuse Out Patients Unit
- Substance Misuse In Patients Unit
- Psychology and Family Services

